

Linc Viera

**1 BHK
&
2 BHK
APARTMENT**

*In Socorro
(Porvorim- Goa)*



QUALITY HOMES SINCE 2006

PROJECT RERA ID: PRGO10190927



TYPICAL 2BHK PLAN

Carpet Area: 51.5m²



TYPICAL 2BHK LAYOUT



TYPICAL 1BHK PLAN

Carpet Area: 37.5m²



TYPICAL 1BHK LAYOUT



QUALITY HOMES SINCE 2006

SPECIFICATIONS

FLOORING

- Vitrified/Ceramic Tiles 2'x2'
- Anti-slip tiles for balconies and terraces

BATHROOMS

- Anti-slip floor tiles
- Designer wall tiles up to 2.1m
- Hindware / equivalent fittings

ELECTRICALS

- Copper wiring
- 3-Phase Connection
- Branded Switches (Anchor /Great White / equivalent)
- Inverter provision inside each apartment

PAINT

- Interior: Lambi with distemper
- Exterior: Textured weather shield paint

KITCHEN

- Granite top counter

DOORS & WINDOWS

- Anodised aluminium windows
- Compressed wood doors

GATED COMPLEX | COMMUNITY HALL | CCTV SURVEILLANCE

* Please note carpet areas mentioned here are approximate. Precise area details specific to the unit of choice shall be provided separately



2BHK Terrace Apartment



2BHK Living Dining



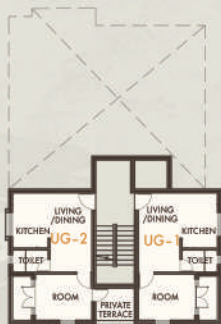
Bedroom

TRULY AFFORDABLE | CONVENIENT | JUST 500M FROM HIGHWAY

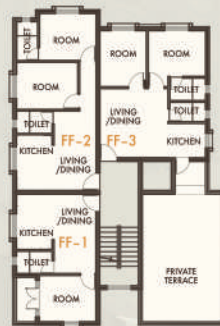
BLOCK A



LOWER STILT FLOOR



UPPER STILT FLOOR



FIRST FLOOR



SECOND FLOOR

BLOCK B



LOWER STILT FLOOR



UPPER STILT FLOOR



FIRST FLOOR



SECOND FLOOR

BLOCK C



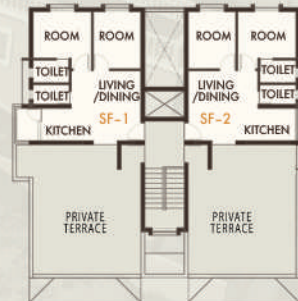
LOWER STILT FLOOR



UPPER STILT FLOOR



FIRST FLOOR



SECOND FLOOR



1BHK Living Dining Kitchen

LOCATION MAP



SITE PLAN



CLIENT TESTIMONIAL

"It is wonderful to be associated with a builder who values relationships with customers over money, and has good values and ethics. It is because of the wonderful relationship that Linc maintains with us and the quality they deliver that we continue to recommend our friends and family to purchase homes from Linc."



QUALITY HOMES SINCE 2006

FOR BOOKINGS

CALL: +91-8600-800-222

EMAIL: sales@lincproperty.in

www.lincproperty.in

All illustrations are artist's impression only. All landscaping features are indicative and subject to change. The information contained in this leaflet is subject to change as may be required by the authorities or the company and cannot form part of an offer or contract. All measurements are approximate. Homes are typically delivered unfurnished. Colour schemes and textures may change. While every reasonable care is taken in providing this information, the developers cannot be held responsible for any inaccuracy.

RERA ID: PRGO10190927